

Fixed Displacement Checkball Piston Pumps For Water-Based Fluids

PF4300 SERIES

2.2 to 8.2 gpm (8,3 to 31,0 L/min) at 1800 rpm
8000 to 15 000 psi (560 to 1040 bar)

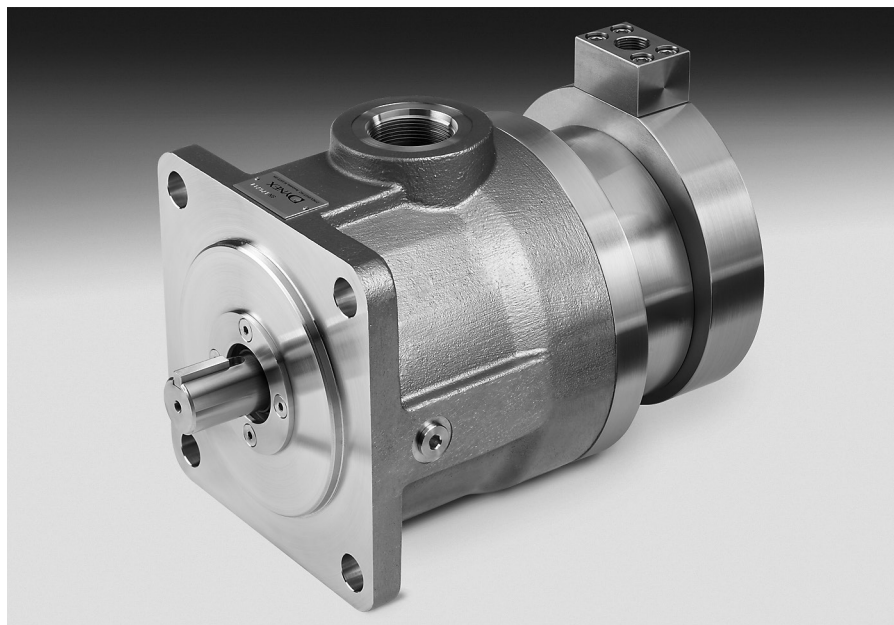
These corrosion resistant, stainless steel pumps are compatible with a variety of water-based and other low-lubricity fluids. Bi-directional shaft rotation provides constant direction of output flow regardless of drive shaft rotation.

MAINTENANCE-FREE DESIGN

The single-fluid checkball design uses the pumped fluid for internal bearing lubrication. This eliminates the potential for fluid cross-contamination, possible in other designs with isolated lubrication. It also avoids the cost of a lubrication circuit.

DESIGN ADVANTAGES

Individual piston check valves take the place of the rotating barrel/valveplate in other pump designs. This means fewer wear surfaces, greater resistance to cavitation damage, and higher volumetric efficiency.



SPECIFICATIONS

Pump Models	Output Flow at 1200 rpm ^{①②}		Output Flow at 1500 rpm ^{①②}		Output Flow at 1800 rpm ^{①②}		Theoretical Displacement		Maximum Pressure		Speed rpm ^②	
	U.S. gpm	L/min	U.S. gpm	L/min	U.S. gpm	L/min	CIR	CCR	psi	bar	Min	Max
PF4303(Q)-22	1.5	5,7	1.8	6,8	2.2	8,3	0.33	5,43	8000	560	900	1800
PF4304(Q)-22	2.1	7,9	2.7	10,2	3.2	12,1	0.47	7,68	8000	560	900	1800
PF4305(Q)-22	2.5	9,5	3.1	11,7	3.7	14,0	0.55	9,05	8000	560	900	1800
PF4306(Q)-22	3.1	11,7	3.8	14,4	4.6	17,4	0.66	10,86	8000	560	900	1800
PF4308(Q)-22	3.6	13,6	4.5	17,0	5.4	20,4	0.78	12,80	8000	560	900	1800
PF4309(Q)-22	4.0	15,1	5.0	18,9	6.0	22,7	0.88	14,30	8000	560	900	1800
PF4310(Q)-22	4.5	17,0	5.7	21,6	6.8	25,7	0.98	16,12	8000	560	900	1800
PF4312(Q)-22	5.5	20,8	6.8	25,7	8.2	31,0	1.18	19,34	8000	560	900	1800
PF4303H-22	1.3	4,9	1.7	6,4	2.0	7,6	0.33	5,43	15 000	1040	900	1800
PF4304H-22	2.1	7,9	2.6	9,8	3.1	11,7	0.47	7,68	12 000	830	900	1800
PF4305H-22	2.4	9,1	3.0	11,4	3.6	13,6	0.55	9,05	10 000	700	900	1800
PF4306H-22	2.9	11,0	3.7	14,0	4.4	16,7	0.66	10,86	10 000	700	900	1800
PF4308H-22	3.5	13,2	4.4	16,7	5.3	20,1	0.78	12,80	10 000	700	900	1800
PF4309H-22	3.9	14,8	4.9	18,5	5.9	22,3	0.88	14,30	10 000	700	900	1800
PF4310H-22	4.5	17,0	5.6	21,2	6.7	25,4	0.98	16,12	10 000	700	900	1800
PF4312H-22	5.4	20,4	6.8	25,7	8.1	30,7	1.18	19,34	10 000	700	900	1800

① Output flow based on typical performance using 33 SUS (1,9 cSt) water glycol fluid at maximum pressure with pressurized inlet where required. Refer to the "Minimum Inlet Pressure" table on page 2.

② Contact the Dynex Sales department for a review of applications requiring operation below the minimum speed of 900 rpm.

PUMP SELECTION

The table on the previous page shows specifications for standard pressure models, and for high pressure "H" option models for maximum pressures to 15 000 psi (1040 bar). The "H" option requires high pressure coned and threaded or BSPP outlet ports.

Standard pressure models with improved suction capability ("Q" option) are available. Refer to *Minimum Inlet Pressure* table.

Refer to *Typical Model Code* on page 5 to specify shaft, seal and outlet port options.

INSTALLATION AND OPERATING

Refer to *Checkball Pumps Service, Installation and Operating Instructions* on the Dynex website

All dimensions are shown in inches (millimeters in parentheses) and are nominal.

Note that models PF4303 and PF4304 have three pistons; models PF4305, PF4308, PF4309 and PF4310 have five pistons; and models PF4306 and PF4312 have six pistons.

Mounting

SAE D 4-bolt pattern with 0.25 inch (6,4 mm) pilot engagement.

Shaft Options

Standard keyed shaft, 1.250 inch (31,75 mm) diameter.

Optional spline shaft, 1.248/1.247 inch (31,7/31,67mm) diameter standard SAE 14 tooth, 12/24 DP 30° involute spline.

Outlet Port Options

Full flow and Split-Flow® models are available with the following options:

Standard pressure models have SAE ports. High pressure "H" option models require the use of outlet port option "A" (Autoclave Medium Pressure, Butech M/P or equivalent fittings), or outlet port option "B" (British Standard Pipe Parallel fittings).

As shown, the outlet port on these pumps is machined in a block integrally mounted to the pump barrel. Refer to *Typical Model Code* on page 5 to specify the port.

MINIMUM INLET PRESSURE^{①②}

IMPORTANT: Pumps may require pressurized inlet conditions at higher speeds. Failure to meet minimum inlet requirements will result in flow reduction. Refer to the table.

Pump Models	Operating Speed					
	1200 rpm		1500 rpm		1800 rpm	
	psig	bar(g)	psig	bar(g)	psig	bar(g)
PF4303, PF4305, and PF4306	0	0	0	0	0	0
PF4304 and PF4308	0	0	0	0	5 (.5)	0,4 (0,03)
PF4309	0	0	5 (0)	0,4 (0)	10 (1)	0,7 (0,07)
PF4310 and PF4312	0	0	5 (0)	0,4 (0)	15 (2)	1,0 (0,14)

① Values shown are based on fluid viscosity of 33 SUS (1,9 cSt) and related to 1 atmosphere (29.92" Hg).

② Values in parentheses are for "Q" option.

HYDRAULIC FLUID VISCOSITY GUIDELINES^①

Operating					
Minimum		Maximum		Start-up	
SUS	cSt	SUS	cSt	SUS	cSt
32	1,5	927	200	927	200

① If fluid conditions fall outside of the range shown, contact the Sales department.

Orientation/Drive

Shaft horizontal with inlet vertically up is preferred. Vertical shaft mounting is possible, but requires connecting a line to the bleed port in the pump housing. Contact the Dynex Sales department for more information.

Seal Options

Standard seals are Buna-N (Nitrile). Options include Fluorocarbon (Viton® or Fluorel®), Disogrin, or EPR outlet seals.

Refer to *Typical Model Code* on page 5.

Minimum Filtration Levels

Pump inlet: 150 µ nominal;
Pressure or return line: 25 µ nominal.

While finer filtration levels than these are desirable and will result in longer component life, restricting flow to the pump inlet should be avoided. Minimum recommended inlet conditions must be maintained.

Weight (Mass):

116 lb (53 kg).

FLUID RECOMMENDATIONS

Special Fluid Operation

Because of the wide range of water-based fluid characteristics, contact the Dynex Sales department for a review of the application requiring non-petroleum based fluid. Refer to: *Water-Based Fluid Recommendations and Port Specifications* on the Dynex website.

Fluid Viscosity Specifications

Using fluid with the correct viscosity range is critical to component life.

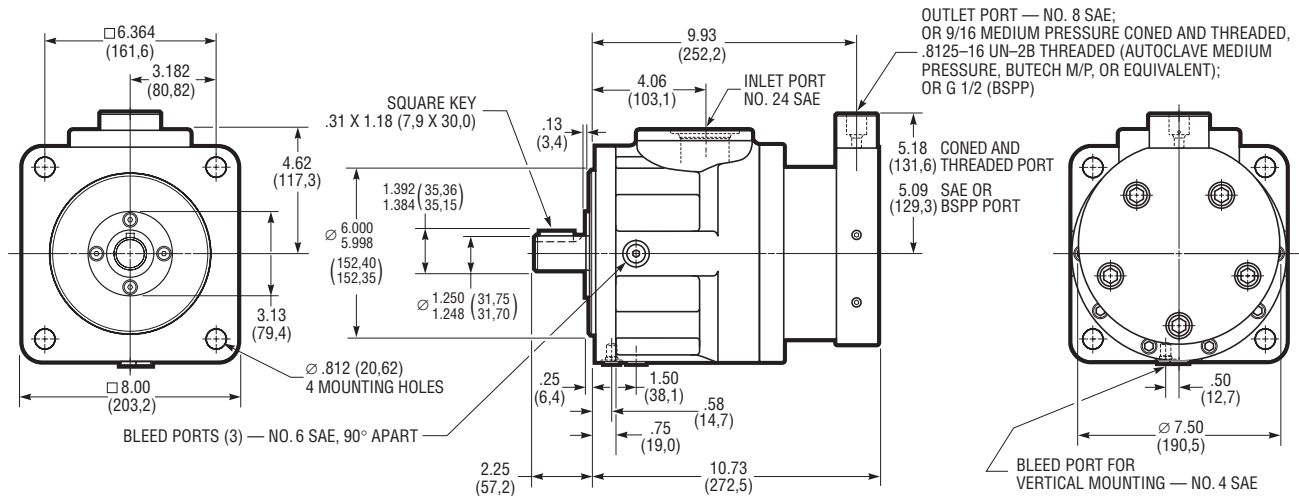
Fluid conditions outside the ranges shown in the *Hydraulic Fluid Viscosity Guidelines* table may result in reduced pump output, requiring pressurized inlet conditions. For more information, contact the Dynex Sales department.

TYPICAL APPLICATIONS

These pumps are ideal for use in wellhead safety control systems and other subsea applications, providing long life operating at high pressures with water-based fluids.

They are also used on hydroform presses, and other applications requiring environmentally-friendly or fire-resistant fluids.

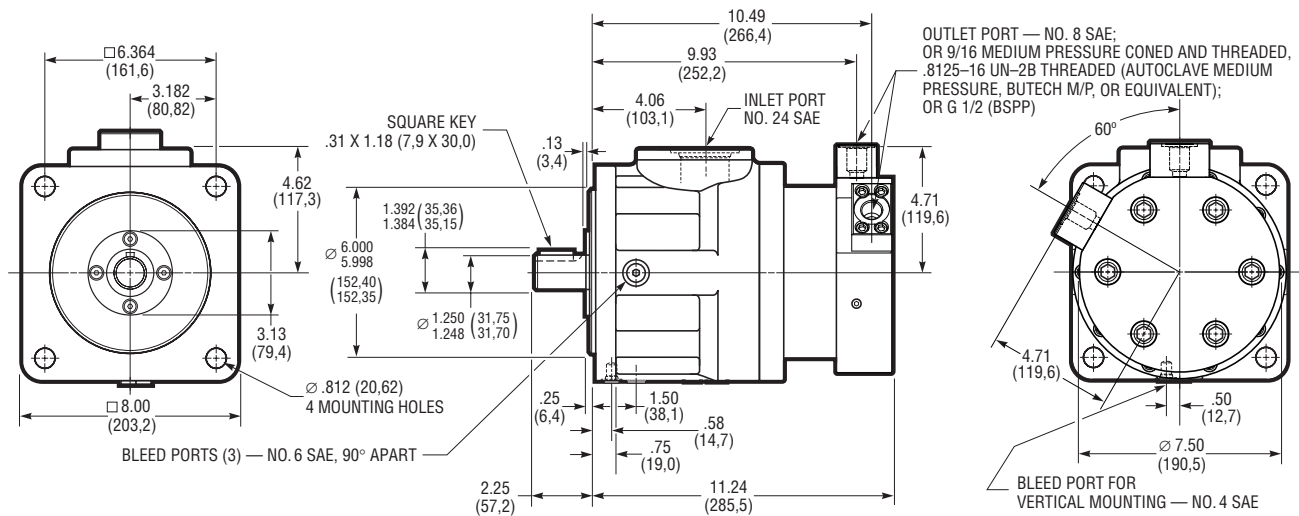
FULL FLOW MODELS



SPLIT-FLOW® MODELS

Split-Flow® provides multiple outlets from a single pump. Models with Split-Flow® covers efficiently supply two or more flows for multiple function circuits. Multiple outlet pumps can be used for synchronized actuator movement.

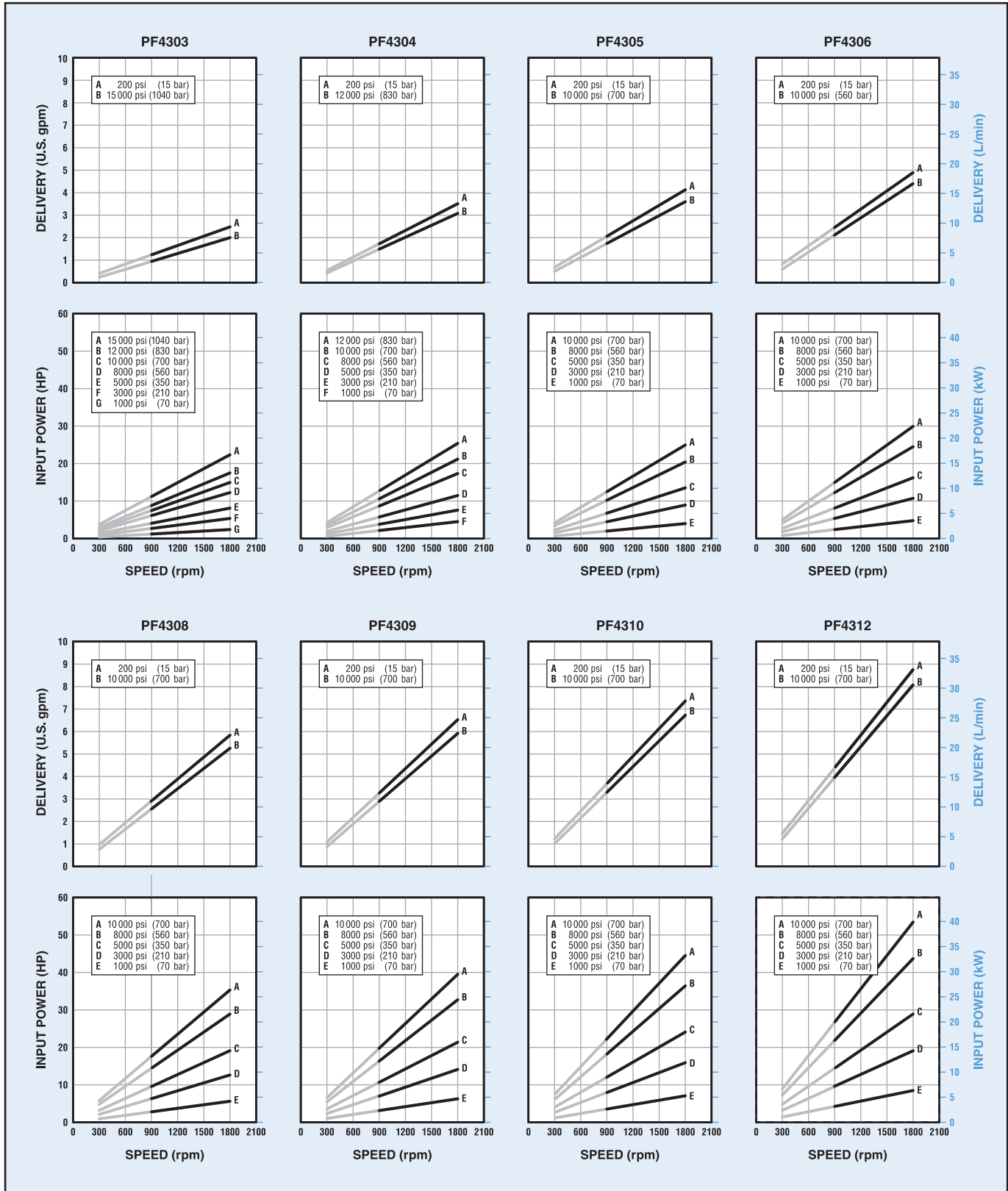
Piston outputs are grouped together in the cover with various piston flow splits available.



Split-Flow (3+3) Three-piston output + Three-piston output

TYPICAL PERFORMANCE CURVES^①

IMPORTANT: Typical performance curves are based on 33 SUS (1.9 cSt) and related to 1 atmosphere (29.92" Hg) water glycol fluid. Pumps may require pressurized inlet conditions at higher speeds, or with higher viscosity fluids. Failure to meet minimum inlet requirements will result in flow reduction. Refer to the table on page 2.



^① Contact the Dynex Sales department for operation below 900 rpm.

TYPICAL MODEL CODE

PF43		03	H – S		D	A	–	33	–	22
Pump Type		Output Flow ^{①②③} (At 1800 rpm)		Ports		Split-Flow® Options		Seals		Design Number
PF43	Fixed Displacement Checkball Pump									
03	Standard: 2.2 gpm (8,3 L/min) “H” option: 2.0 gpm (7,5 L/min)									
04	Standard: 3.2 gpm (12,1 L/min) “H” option: 3.1 gpm (11,7 L/min)									
05	Standard: 3.7 gpm (14,0 L/min) “H” option: 3.6 gpm (13,6 L/min)									
06	Standard: 4.4 gpm (16,6 L/min) “H” option: 4.4 gpm (16,6 L/min)									
08	Standard: 5.4 gpm (20,4 L/min) “H” option: 5.3 gpm (19,9 L/min)									
09	Standard: 6.0 gpm (22,7 L/min) “H” option: 5.9 gpm (22,3 L/min)									
10	Standard: 6.8 gpm (25,7 L/min) “H” option: 6.7 gpm (25,3 L/min)									
12	Standard: 8.2 gpm (31,0 L/min) “H” option: 8.1 gpm (30,7 L/min)									
① Output flows based on typical performance at maximum pressure. Refer to performance curves for flows at lower pressures and speeds.										
② Models PF4303 and PF4304 have three pistons; models PF4305, PF4308, PF4309 and PF4310 have five pistons; models PF4306 and PF4312 have six pistons.										
③ “H” option not available with “Q” option.										



USA Headquarters

770 Capitol Drive
Pewaukee, WI 53072
Tel: +1 (262) 691-0300
Fax: +1 (262) 691-0312
sales@dynexhydraulics.com



Power Units & Systems

54 Nickerson Road
Ashland, MA 01721
Tel: +1 (508) 881-5110
ashland@dynexhydraulics.com



European Sales

Unit C5 Steel Close, Little End Road,
Eaton Socon, St Neots,
Cambs. PE19 8TT United Kingdom
Tel: +44 (0) 1480 213980
Fax: +44 (0) 01480 405662
sales@dynexhydraulics.co.uk



Middle East Sales

JAFZA 1, Tower A, 11th Floor
Jebel Ali Freezone
Dubai, UAE
Tel: +971 547422353
UAESales@dynexhydraulics.com

Specifications shown were in effect when published. Since errors or omissions are possible, contact your Dynex Sales representative or the Dynex Sales department for the most current specifications before ordering. Dynex reserves the right to discontinue products or change designs at any time without incurring any obligation.

www.dynexhydraulics.com